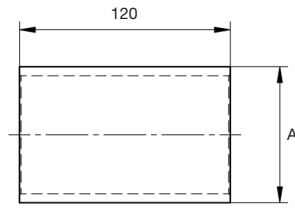
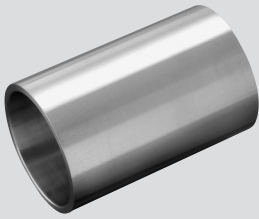


## GR-1002

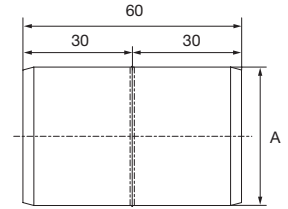
Stossrohr  
Raccord



für Rohr AD pour tube DE A Ø mm	CHF/ Stk CHF/ pce <b>V2A</b>	Abmessung Stossrohr dimension raccord mm
<b>33,7×2</b>	<b>5.40</b>	29×1,5
<b>42,4×2</b>	<b>5.90</b>	38×2

## GR-1012

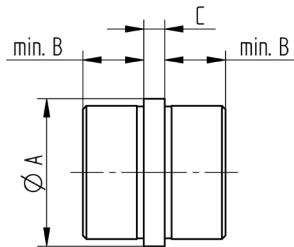
Stossrohr mit Anschlag  
Raccord mal-rond, avec butée cachée



für Rohr AD pour tube DE A Ø mm	CHF/ Stk CHF/ pce <b>V2A</b>
<b>33,7×2</b>	<b>6.50</b>
<b>42,4×2</b>	<b>7.10</b>
<b>48,3×2</b>	<b>7.70</b>

## GR-1022

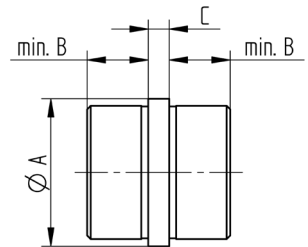
Stossrohr, geschliffen  
Raccord, meulé



für Rohr AD pour tube DE A Ø mm	CHF/ Stk CHF/ pce <b>V2A</b>	min. B mm	C mm
<b>33,7×2</b>	<b>7.10</b>	18	5
<b>42,4×2</b>	<b>8.20</b>	20	6
<b>48,3×2</b>	<b>9.60</b>	22,5	5,5

## GR-1004

Stossrohr, geschliffen  
Raccord, meulé



für Rohr AD pour tube DE A Ø mm	CHF/ Stk CHF/ pce <b>V4A</b>	min. B mm	C mm
<b>33,7×2</b>	<b>10.10</b>	25	3
<b>42,4×2</b>	<b>11.40</b>	25	4
<b>48,3×2</b>	<b>13.30</b>	25	4
<b>60,3×2</b>	<b>19.20</b>	27	6