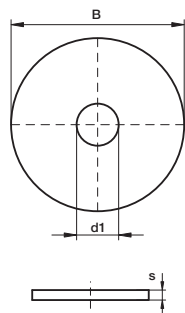


R-6665

Unterlegscheiben für **Strut**
Rondelle pour Strut



passend zu Schienen
convenable pour rails

B×d1×s
mm

CHF / Stk
CHF / pce
V4A

41×21 / 41×41

40× 8,5×2,5

1.50

40×10,5×2,5

1.80

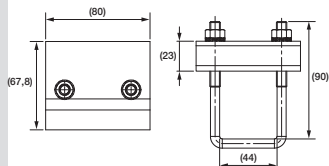
40×12,5×2,5

3.20

R-6676

Schienenträgerklammer **Strut**
Accroche Strut

NEU



passend zu Schienen
convenable pour rails

CHF / Stk
CHF / pce
V4A

Gewinde
mm

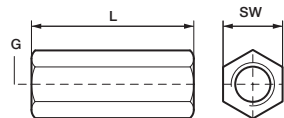
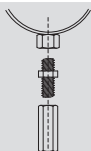
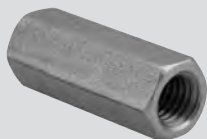
41×21 / 41×41

33.40

M8

R-6530

Verlängerungsmuttern mit **metrischem** Gewinde
Ecrou de rallonge avec filetage métrique



G

mm

L

mm

CHF / Stk
CHF / pce
V4A

SW
mm

M 6

18

2.50

10

M 8

24

3.70

13

M10

30

4.90

17

M12

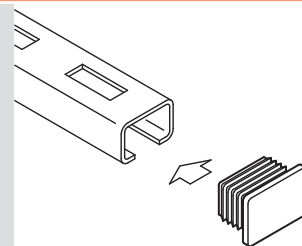
36

6.80

19

R-6690

Stopfen für Schienen, PE, grün, für **Strut**
Bouchon pour rail, PE, vert, pour Strut



passend zu Schienen
convenable pour rails

CHF / Stk
CHF / pce
PE

41×21

-.80

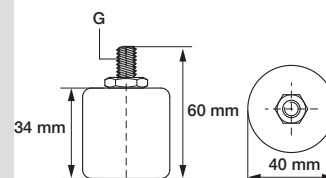
41×41

-.90

R-6677

Fixpunkt Schalldämpfer dB-FIX® 40 **Strut**
Point fixe pour l'isolation phonique dB-FIX® 40 Strut

NEU



G

M10

F a.z
(N)

500

CHF / Stk
CHF / pce
V2A

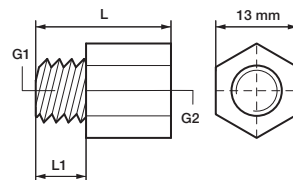
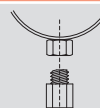
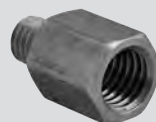
34.40

H
mm

60

R-6540

Reduzierstücke **metrisch**, Aussengewinde/Innengewinde
Réduction métrique, filetage mâle/femelle



G1

mm

G2

mm

CHF / Stk
CHF / pce
V4A

L

mm

L1

mm

M 8

M10

6.70

23

6

M10

M 8

6.70

21

6