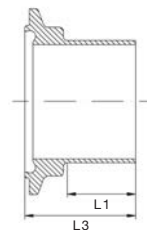
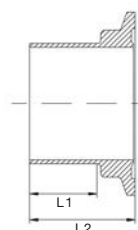
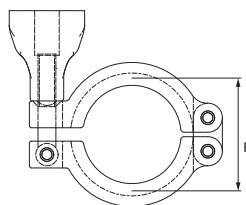
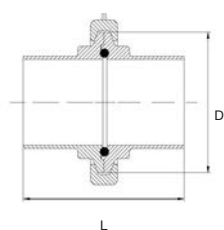
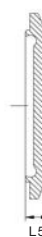
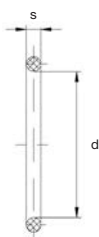


Klemmverbindung nach DIN 11864-3, Form A Collier selon DIN 11864-3, forme A



Reihe C série C			Klemmverbindung collier		R-784-V Klammer collier			R-720 Bundklemmstutzen raccord à souder femelle			R-721 Nutklemmstutzen raccord à souder mâle		
DN	AD×Wand/DE×paroi mm		L mm	D mm	F mm	P bar	AISI 304 CHF/Stk	L1 mm	L2 mm	1.4404 CHF/Stk	L1 mm	L3 mm	1.4404 CHF/Stk
1/2"	12,7	1,65	76	34	34	40	17.70	26	38	17.40	26	39,5	17.80
3/4"	19,05	1,65	76	34	34	40	17.70	26	38	18.50	26	39,5	18.90
1"	25,4	1,65	77	50,5	50,5	40	18.-	28	38,5	21.-	28	40	21.60
1 1/2"	38,1	1,65	88	64	64	40	22.60	30	44	24.50	30	45,5	25.40
2"	50,8	1,65	89	77,5	77,5	25	25.90	30	44,5	31.80	30	46	32.70
2 1/2"	63,5	1,65	115	91	91	25	29.30	40	57,5	49.20	40	59	50.40
3"	76,2	1,65	117	106	106	16	32.10	40	58,5	61.70	40	60	64.-
4"	101,6	2,11	119	130	130	16	51.10	40	59,5	83.60	40	61	86.90

Klemmverbindung nach DIN 11864-3, Form A Collier selon DIN 11864-3, forme A



Reihe C série C			R-791 O-Ring joint torique		R-722 Blindbundstutzen bouchon femelle (CLAMP)		R-723 Blindnutstutzen bouchon mâle (CLAMP)	
DN	AD×Wand/DE×paroi mm		d×s mm	EPDM CHF/Stk	L4 mm	1.4404/1.4435 CHF/Stk	L5 mm	1.4404/1.4435 CHF/Stk
1/2"	12,7	1,65	12×3,5	2.60	8	53.-	10	56.10
3/4"	19,05	1,65	18×3,5	2.70	8	58.50	10	61.70
1"	25,4	1,65	24×3,5	3.20	10	59.60	11,5	62.90
1 1/2"	38,1	1,65	37×5	3.80	10	71.80	11,5	75.90
2"	50,8	1,65	50×5	5.10	10	78.-	11,5	81.20
2 1/2"	63,5	1,65	62×5	5.90	10	92.60	11,5	95.80
3"	76,2	1,65	75×5	6.70	12	150.-	13,5	123.-
4"	101,6	2,11	100×5	11.-	14	141.-	15,5	145.-